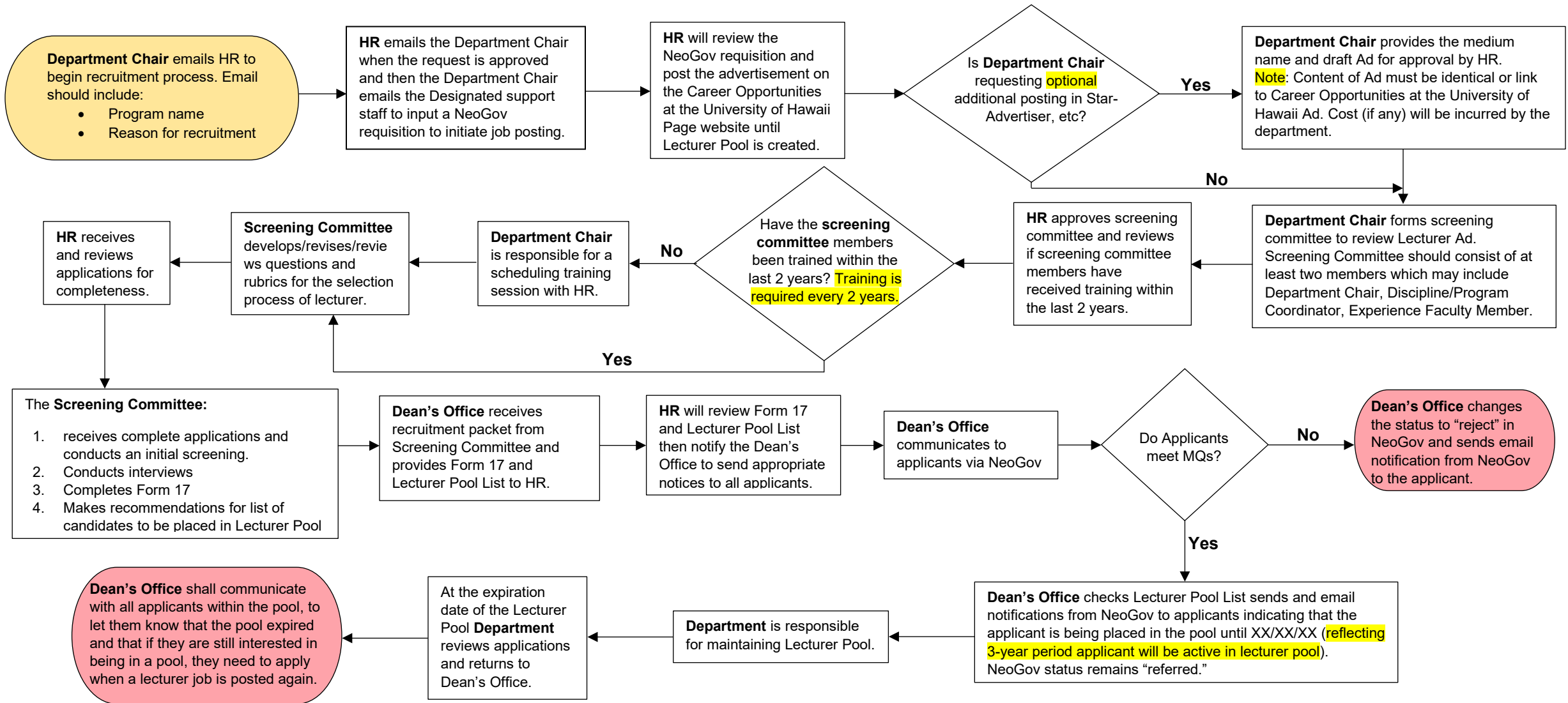


New Hire Lecturer Flow Chart (Continuous Recruitment)



Important Notes:

- Hire by Exception
 - If a lecturer is hired by exception, NeoGov **MUST** have a lecturer job ad active and posted.
 - If there is an applicant that meets all the MQs and is selected by the screening committee, then the department must consider offering a lecturer position to replace the lecturer who was hired by exception.
- Per A9.560, lecturers need not re-apply if they are re-appointments, i.e. Fall to Spring to Fall hire or Fall to Fall hire.
- Retention period of Recruitment Packets are 3 years.